

Triangle angle sums related to translation curves in Sol geometry

Jenő Szirmai

Abstract. After having investigated the geodesic and translation triangles and their angle sums in \mathbf{Nil} and $\widetilde{\mathbf{SL}_2\mathbf{R}}$ geometries we consider the analogous problem in \mathbf{Sol} space that is one of the eight 3-dimensional Thurston geometries. We analyse the interior angle sums of translation triangles in \mathbf{Sol} geometry and prove that it can be larger or equal than π . In our work we will use the projective model of \mathbf{Sol} described by E. Molnár in [9].

Mathematics Subject Classification (2010): 53A20, 53A35, 52C35, 53B20.

Keywords: Thurston geometries, \mathbf{Sol} geometry, translation and geodesic triangles, interior angle sum.

1. Introduction

In the Thurston spaces can be introduced in a natural way (see [9]) translations mapping each point to any point. Consider a unit vector at the origin. Translations, postulated at the beginning carry this vector to any point by its tangent mapping. If a curve $t \rightarrow (x(t), y(t), z(t))$ has just the translated vector as tangent vector in each point, then the curve is called a *translation curve*. This assumption leads to a system of first order differential equations, thus translation curves are simpler than geodesics and differ from them in \mathbf{Nil} , $\widetilde{\mathbf{SL}_2\mathbf{R}}$ and \mathbf{Sol} geometries. In \mathbf{E}^3 , \mathbf{S}^3 , \mathbf{H}^3 , $\mathbf{S}^2 \times \mathbf{R}$ and $\mathbf{H}^2 \times \mathbf{R}$ geometries the mentioned curves coincide with each other.

Therefore, the translation curves also play an important role in \mathbf{Nil} , $\widetilde{\mathbf{SL}_2\mathbf{R}}$ and \mathbf{Sol} geometries and often seem to be more natural in these geometries, than their geodesic lines.

A translation triangle in Riemannian geometry and more generally in metric geometry a figure consisting of three different points together with the pairwise-connecting translation curves. The points are known as the vertices, while the translation curve segments are known as the sides of the triangle.

In the geometries of constant curvature \mathbf{E}^3 , \mathbf{H}^3 , \mathbf{S}^3 the well-known sums of the interior angles of geodesic (or translation) triangles characterize the space. It is related to the Gauss-Bonnet theorem which states that the integral of the Gauss curvature on a compact 2-dimensional Riemannian manifold M is equal to $2\pi\chi(M)$ where $\chi(M)$ denotes the Euler characteristic of M . This theorem has a generalization to any compact even-dimensional Riemannian manifold (see e.g. [4], [6], [8]).

In [5] we investigated the angle sum of translation and geodesic triangles in $\widetilde{\mathbf{SL}_2\mathbf{R}}$ geometry and proved that the possible sum of the interior angles in a translation triangle must be greater or equal than π . However, in geodesic triangles this sum is less, greater or equal to π .

In [19] we considered the analogous problem for geodesic triangles in \mathbf{Nil} geometry and proved that the sum of the interior angles of geodesic triangles in \mathbf{Nil} space is larger, less or equal than π .

In [2] K. Brodaczewska showed, that sum of the interior angles of translation triangles of the \mathbf{Nil} space is larger or equal than π .

However, in $\mathbf{S}^2 \times \mathbf{R}$, $\mathbf{H}^2 \times \mathbf{R}$ and \mathbf{Sol} Thurston geometries there are no result concerning the angle sums of translation or geodesic triangles. Therefore, it is interesting to study similar question in the above three geometries. Now, we are interested in *translation triangles* in \mathbf{Sol} space [15, 20].

In Section 2 we describe the projective model and the isometry group of \mathbf{Sol} , moreover, we give an overview about its translation curves.

Remark 1.1. We note here, that nowadays the \mathbf{Sol} geometry is a widely investigated space concerning its manifolds, tilings, geodesic and translation ball packings and probability theory (see e.g. [1], [3], [7], [11], [12], [13], [17], [18] and the references given there).

In Section 3 we study the \mathbf{Sol} translation triangles and prove that their interior angle sums can be larger or equal than π .

2. On \mathbf{Sol} geometry

In this Section we summarize the significant notions and notations of real \mathbf{Sol} geometry (see [9], [15]).

\mathbf{Sol} is defined as a 3-dimensional real Lie group with multiplication

$$(a, b, c)(x, y, z) = (x + ae^{-z}, y + be^z, z + c). \quad (2.1)$$

We note that the conjugacy by (x, y, z) leaves invariant the plane (a, b, c) with fixed c :

$$(x, y, z)^{-1}(a, b, c)(x, y, z) = (x(1 - e^{-c}) + ae^{-z}, y(1 - e^c) + be^z, c). \quad (2.2)$$

Moreover, for $c = 0$, the action of (x, y, z) is only by its z -component, where $(x, y, z)^{-1} = (-xe^z, -ye^{-z}, -z)$. Thus the $(a, b, 0)$ plane is distinguished as a *base plane* in \mathbf{Sol} , or by other words, $(x, y, 0)$ is normal subgroup of \mathbf{Sol} . \mathbf{Sol} multiplication can also be affinely (projectively) interpreted by "right translations" on its points

as the following matrix formula shows, according to (2.1):

$$(1; a, b, c) \rightarrow (1; a, b, c) \begin{pmatrix} 1 & x & y & z \\ 0 & e^{-z} & 0 & 0 \\ 0 & 0 & e^z & 0 \\ 0 & 0 & 0 & 1 \end{pmatrix} = (1; x + ae^{-z}, y + be^z, z + c) \quad (2.3)$$

by row-column multiplication.

This defines "translations" $\mathbf{L}(\mathbf{R}) = \{(x, y, z) : x, y, z \in \mathbf{R}\}$ on the points of space $\mathbf{Sol} = \{(a, b, c) : a, b, c \in \mathbf{R}\}$. These translations are not commutative, in general. Here we can consider \mathbf{L} as projective collineation group with right actions in homogeneous coordinates as usual in classical affine-projective geometry. We will use the Cartesian homogeneous coordinate simplex $E_0(\mathbf{e}_0), E_1^\infty(\mathbf{e}_1), E_2^\infty(\mathbf{e}_2), E_3^\infty(\mathbf{e}_3), (\{\mathbf{e}_i\} \subset \mathbf{V}^4$ with the unit point $E(\mathbf{e} = \mathbf{e}_0 + \mathbf{e}_1 + \mathbf{e}_2 + \mathbf{e}_3)$) which is distinguished by an origin E_0 and by the ideal points of coordinate axes, respectively. Thus **Sol** can be visualized in the affine 3-space \mathbf{A}^3 (so in Euclidean space \mathbf{E}^3) as well [9].

In this affine-projective context E. Molnár has derived in [9] the usual infinitesimal arc-length square at any point of **Sol**, by pull back translation, as follows

$$(ds)^2 := e^{2z}(dx)^2 + e^{-2z}(dy)^2 + (dz)^2. \quad (2.4)$$

Hence we get infinitesimal Riemann metric invariant under translations, by the symmetric metric tensor field g on **Sol** by components as usual.

It will be important for us that the full isometry group $\text{Isom}(\mathbf{Sol})$ has eight components, since the stabilizer of the origin is isomorphic to the dihedral group \mathbf{D}_4 , generated by two involutive (involutory) transformations, preserving (2.4):

(1) $y \leftrightarrow -y$; (2) $x \leftrightarrow y$; $z \leftrightarrow -z$; i.e. first by 3×3 matrices :

$$(1) \begin{pmatrix} 1 & 0 & 0 \\ 0 & -1 & 0 \\ 0 & 0 & 1 \end{pmatrix}; \quad (2) \begin{pmatrix} 0 & 1 & 0 \\ 1 & 0 & 0 \\ 0 & 0 & -1 \end{pmatrix}; \quad (2.5)$$

with its product, generating a cyclic group \mathbf{C}_4 of order 4

$$\begin{pmatrix} 0 & 1 & 0 \\ -1 & 0 & 0 \\ 0 & 0 & -1 \end{pmatrix}; \quad \begin{pmatrix} -1 & 0 & 0 \\ 0 & -1 & 0 \\ 0 & 0 & 1 \end{pmatrix}; \quad \begin{pmatrix} 0 & -1 & 0 \\ 1 & 0 & 0 \\ 0 & 0 & -1 \end{pmatrix}; \quad \mathbf{Id} = \begin{pmatrix} 1 & 0 & 0 \\ 0 & 1 & 0 \\ 0 & 0 & 1 \end{pmatrix}.$$

Or we write by collineations fixing the origin $O(1, 0, 0, 0)$:

$$(1) \begin{pmatrix} 1 & 0 & 0 & 0 \\ 0 & 1 & 0 & 0 \\ 0 & 0 & -1 & 0 \\ 0 & 0 & 0 & 1 \end{pmatrix}, \quad (2) \begin{pmatrix} 1 & 0 & 0 & 0 \\ 0 & 0 & 1 & 0 \\ 0 & 1 & 0 & 0 \\ 0 & 0 & 0 & -1 \end{pmatrix} \quad \text{of form (2.3)}. \quad (2.6)$$

A general isometry of **Sol** to the origin O is defined by a product $\gamma_O\tau_X$, first γ_O of form (2.6) then τ_X of (2.3). To a general point $A(1, a, b, c)$, this will be a product $\tau_A^{-1}\gamma_O\tau_X$, mapping A into $X(1, x, y, z)$.

Conjugacy of translation τ by an above isometry γ , as $\tau^\gamma = \gamma^{-1}\tau\gamma$ also denotes it, will also be used by (2.3) and (2.6) or also by coordinates with above conventions. We note here that the **Sol**-space is translation-complete, i.e. every two points of the

Sol-space can be connected through one translation arc and every three points form a triangle, when they are not on the same translation curve.

We remark only that the role of x and y can be exchanged throughout the paper, but this leads to the mirror interpretation of **Sol**. As formula (2.4) fixes the metric of **Sol**, the change above is not an isometry of a fixed **Sol** interpretation. Other conventions are also accepted and used in the literature.

Sol is an affine metric space (affine-projective one in the sense of the unified formulation of [9]). Therefore its linear, affine, unimodular, etc. transformations are defined as those of the embedding affine space.

2.1. Translation curves

We consider a **Sol** curve $(1, x(t), y(t), z(t))$ with a given starting tangent vector at the origin $O(1, 0, 0, 0)$

$$u = \dot{x}(0), \quad v = \dot{y}(0), \quad w = \dot{z}(0). \tag{2.7}$$

For a translation curve let its tangent vector at the point $(1, x(t), y(t), z(t))$ be defined by the matrix (2.3) with the following equation:

$$(0, u, v, w) \begin{pmatrix} 1 & x(t) & y(t) & z(t) \\ 0 & e^{-z(t)} & 0 & 0 \\ 0 & 0 & e^{z(t)} & 0 \\ 0 & 0 & 0 & 1 \end{pmatrix} = (0, \dot{x}(t), \dot{y}(t), \dot{z}(t)). \tag{2.8}$$

Thus, *translation curves* in **Sol** geometry (see [10] and [11]) are defined by the first order differential equation system $\dot{x}(t) = ue^{-z(t)}$, $\dot{y}(t) = ve^{z(t)}$, $\dot{z}(t) = w$, whose solution is the following:

$$\begin{aligned} x(t) &= -\frac{u}{w}(e^{-wt} - 1), \quad y(t) = \frac{v}{w}(e^{wt} - 1), \quad z(t) = wt, \quad \text{if } w \neq 0 \text{ and} \\ x(t) &= ut, \quad y(t) = vt, \quad z(t) = z(0) = 0 \quad \text{if } w = 0. \end{aligned} \tag{2.9}$$

We assume that the starting point of a translation curve is the origin, because we can transform a curve into an arbitrary starting point by translation (2.3), moreover, unit velocity translation can be assumed :

$$\begin{aligned} x(0) &= y(0) = z(0) = 0; \\ u = \dot{x}(0) &= \cos \theta \cos \phi, \quad v = \dot{y}(0) = \cos \theta \sin \phi, \quad w = \dot{z}(0) = \sin \theta; \\ -\pi &\leq \phi \leq \pi, \quad -\frac{\pi}{2} \leq \theta \leq \frac{\pi}{2}. \end{aligned} \tag{2.10}$$

Definition 2.1. The translation distance $d^t(P_1, P_2)$ between the points P_1 and P_2 is defined by the arc length of the above translation curve from P_1 to P_2 .

Thus we obtain the parametric equation of the the *translation curve segment* $t(\phi, \theta, t)$ with starting point at the origin in direction

$$\mathbf{t}(\phi, \theta) = (\cos \theta \cos \phi, \cos \theta \sin \phi, \sin \theta) \tag{2.11}$$

where $t \in [0, r \in \mathbf{R}^+]$. If $\theta \neq 0$ then the system of equation is:

$$\begin{cases} x(\phi, \theta, t) = -\cot \theta \cos \phi (e^{-t \sin \theta} - 1), \\ y(\phi, \theta, t) = \cot \theta \sin \phi (e^{t \sin \theta} - 1), \\ z(\phi, \theta, t) = t \sin \theta. \end{cases} \tag{2.12}$$

If $\theta = 0$ then : $x(t) = t \cos \phi$, $y(t) = t \sin \phi$, $z(t) = 0$.

3. Translation triangles

We consider 3 points A_1, A_2, A_3 in the projective model of **Sol** space (see Section 2). The *translation segments* a_k connecting the points A_i and A_j ($i < j$, $i, j, k \in \{1, 2, 3\}$, $k \neq i, j$) are called sides of the *translation triangle* with vertices A_1, A_2, A_3 .

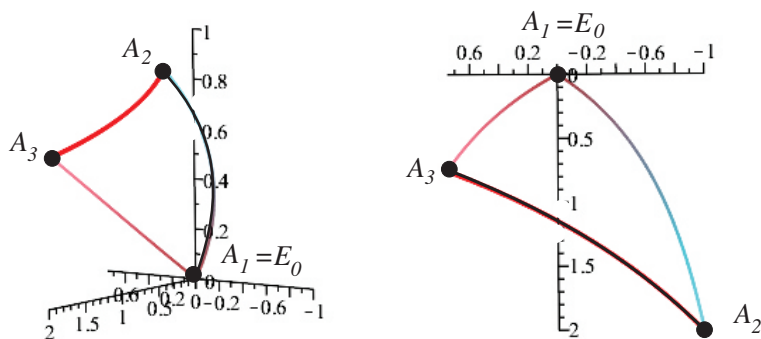


FIGURE 1. Translation triangle with vertices $A_1 = (1, 0, 0, 0)$, $A_2 = (1, -1, 2, 1)$, $A_3 = (1, 3/4, 3/4, 1/2)$.

In Riemannian geometries the metric tensor (or infinitesimal arc-length square (see (2.4)) is used to define the angle θ between two geodesic curves. If their tangent vectors in their common point are \mathbf{u} and \mathbf{v} and g_{ij} are the components of the metric tensor then

$$\cos(\theta) = \frac{u^i g_{ij} v^j}{\sqrt{u^i g_{ij} u^j v^i g_{ij} v^j}} \tag{3.1}$$

It is clear by the above definition of the angles and by the infinitesimal arc-length square (2.4), that the angles are the same as the Euclidean ones at the origin of the projective model of **Sol** geometry.

Considering a translation triangle $A_1 A_2 A_3$ we can assume by the homogeneity of the **Sol** geometry that one of its vertex coincide with the origin $A_1 = E_0 = (1, 0, 0, 0)$ and the other two vertices are $A_2(1, x^2, y^2, z^2)$ and $A_3(1, x^3, y^3, z^3)$.

We will consider the *interior angles* of translation triangles that are denoted at the vertex A_i by ω_i ($i \in \{1, 2, 3\}$). We note here that the angle of two intersecting translation curves depends on the orientation of their tangent vectors.

In order to determine the interior angles of a translation triangle $A_1A_2A_3$ and its interior angle sum $\sum_{i=1}^3(\omega_i)$, we define translations \mathbf{T}_{A_i} , ($i \in \{2, 3\}$) as elements of the isometry group of Sol, that maps the origin E_0 onto A_i (see Fig. 2).

E.g. the isometry \mathbf{T}_{A_2} and its inverse (up to a positive determinant factor) can be given by:

$$\mathbf{T}_{A_2} = \begin{pmatrix} 1 & x^2 & y^2 & z^2 \\ 0 & e^{-z^2} & 0 & 0 \\ 0 & 0 & e^{z^2} & 0 \\ 0 & 0 & 0 & 1 \end{pmatrix}, \quad \mathbf{T}_{A_2}^{-1} = \begin{pmatrix} 1 & -x^2e^{z^2} & -y^2e^{-z^2} & -z^2 \\ 0 & e^{z^2} & 0 & 0 \\ 0 & 0 & e^{-z^2} & 0 \\ 0 & 0 & 0 & 1 \end{pmatrix}, \quad (3.2)$$

and the images $\mathbf{T}_{A_2}^{-1}(A_i)$ of the vertices A_i ($i \in \{1, 2, 3\}$) are the following (see also Fig. 2):

$$\begin{aligned} \mathbf{T}_{A_2}^{-1}(A_1) &= A_1^2 = (1, -x^2e^{z^2}, -y^2e^{-z^2}, -z^2), & \mathbf{T}_{A_2}^{-1}(A_2) &= A_2^2 = E_0 = (1, 0, 0, 0), \\ \mathbf{T}_{A_2}^{-1}(A_3) &= A_3^2 = (1, (x^3 - x^2)e^{z^2}, (y^3 - y^2)e^{-z^2}, z^3 - z^2). \end{aligned} \quad (3.3)$$

Similarly to the above computation we get that the images $\mathbf{T}_{A_3}^{-1}(A_i)$ of the vertices A_i ($i \in \{1, 2, 3\}$) are the following (see also Fig. 2):

$$\begin{aligned} \mathbf{T}_{A_3}^{-1}(A_1) &= A_1^3 = (1, -x^3e^{z^3}, -y^3e^{-z^3}, -z^3), & \mathbf{T}_{A_3}^{-1}(A_3) &= A_3^2 = E_0 = (1, 0, 0, 0), \\ \mathbf{T}_{A_3}^{-1}(A_2) &= A_2^3 = (1, (x^2 - x^3)e^{z^3}, (y^2 - y^3)e^{-z^3}, z^2 - z^3). \end{aligned} \quad (3.4)$$

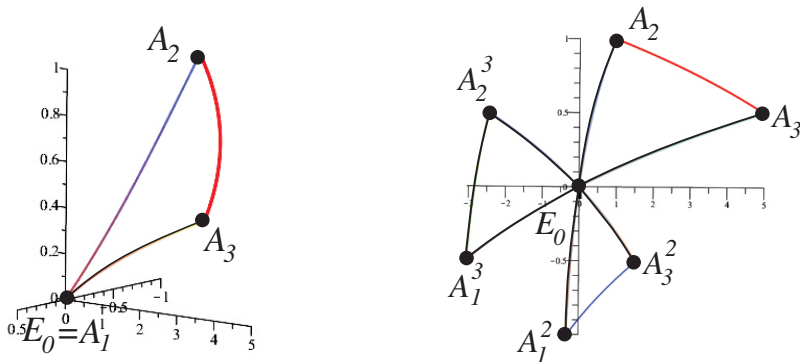


FIGURE 2. Translation triangle with vertices $A_1 = (1, 0, 0, 0)$, $A_2 = (1, -1, 1, 1)$, $A_3 = (1, 1/2, 5, 1/2)$ and its translated copies $A_1^2A_3^2E_0$ and $A_1^3A_2^3E_0$.

Our aim is to determine angle sum $\sum_{i=1}^3(\omega_i)$ of the interior angles of translation triangles $A_1A_2A_3$ (see Fig. 1-2). We have seen that ω_1 and the angle of translation curves with common point at the origin E_0 is the same as the Euclidean one therefore can be determined by usual Euclidean sense.

The translations \mathbf{T}_{A_i} ($i = 2, 3$) are isometries in **Sol** geometry thus ω_i is equal to the angle $(t(A_i^i, A_1^i)t(A_i^i, A_j^i))\sphericalangle$ ($i, j = 2, 3, i \neq j$) (see Fig. 2) where $t(A_i^i, A_1^i)$, $t(A_i^i, A_j^i)$ are oriented translation curves ($E_0 = A_2^2 = A_3^3$) and ω_1 is equal to the angle $(t(E_0, A_2)t(E_0, A_3))\sphericalangle$ where $t(E_0, A_2)$, $t(E_0, A_3)$ are also oriented translation curves.

We denote the oriented unit tangent vectors of the oriented geodesic curves $t(E_0, A_i^j)$ with \mathbf{t}_i^j where $(i, j) \in \{(1, 3), (1, 2), (2, 3), (3, 2), (3, 0), (2, 0)\}$ and $A_3^0 = A_3$, $A_2^0 = A_2$.

The Euclidean coordinates of \mathbf{t}_i^j (see Section 2.1) are :

$$\mathbf{t}_i^j = (\cos(\theta_i^j) \cos(\alpha_i^j), \cos(\theta_i^j) \sin(\alpha_i^j), \sin(\theta_i^j)). \tag{3.5}$$

In order to obtain the angle of two translation curves $t_{E_0A_i^j}$ and $t_{E_0A_k^l}$ ($(i, j) \neq (k, l)$; $(i, j), (k, l) \in \{(1, 3), (1, 2), (2, 3), (3, 2), (3, 0), (2, 0)\}$) intersected at the origin E_0 we need to determine their tangent vectors \mathbf{t}_s^r ($(s, r) \in \{(1, 3), (1, 2), (2, 3), (3, 2), (3, 0), (2, 0)\}$) (see (3.5)) at their starting point E_0 . From (3.5) follows that a tangent vector at the origin is given by the parameters ϕ and θ of the corresponding translation curve (see (2.12)) that can be determined from the homogeneous coordinates of the endpoint of the translation curve as the following Lemma shows:

Lemma 3.1. 1. Let $(1, x, y, z)$ ($y, z \in \mathbf{R} \setminus \{0\}, x \in \mathbf{R}$) be the homogeneous coordinates of the point $P \in \mathbf{Sol}$. The paramerters of the corresponding translation curve t_{E_0P} are the following

$$\begin{aligned} \phi &= \operatorname{arccot}\left(-\frac{x}{y} \frac{e^z - 1}{e^{-z} - 1}\right), \quad \theta = \operatorname{arccot}\left(\frac{y}{\sin \phi (e^z - 1)}\right), \\ t &= \frac{z}{\sin \theta}, \quad \text{where } -\pi < \phi \leq \pi, \quad -\pi/2 \leq \theta \leq \pi/2, \quad t \in \mathbf{R}^+. \end{aligned} \tag{3.6}$$

2. Let $(1, x, 0, z)$ ($x, z \in \mathbf{R} \setminus \{0\}$) be the homogeneous coordinates of the point $P \in \mathbf{Sol}$. The paramerters of the corresponding translation curve t_{E_0P} are the following

$$\begin{aligned} \phi &= 0 \text{ or } \pi, \quad \theta = \operatorname{arccot}\left(\mp \frac{x}{(e^{-z} - 1)}\right), \\ t &= \frac{z}{\sin \theta}, \quad \text{where } -\pi/2 \leq \theta \leq \pi/2, \quad t \in \mathbf{R}^+. \end{aligned} \tag{3.7}$$

3. Let $(1, x, y, 0)$ ($x, y \in \mathbf{R}$) be the homogeneous coordinates of the point $P \in \mathbf{Sol}$. The paramerters of the corresponding translation curve t_{E_0P} are the following

$$\begin{aligned} \phi &= \arccos\left(\frac{x}{\sqrt{x^2 + y^2}}\right), \quad \theta = 0, \\ t &= \sqrt{x^2 + y^2}, \quad \text{where } -\pi < \phi \leq \pi, \quad t \in \mathbf{R}^+. \end{aligned} \tag{3.8}$$

Theorem 3.2. The sum of the interior angles of a translation triangle is greater or equal to π .

Proof. The translations $\mathbf{T}_{A_2}^{-1}$ and $\mathbf{T}_{A_3}^{-1}$ are isometries in **Sol** geometry thus ω_2 is equal to the angle $((A_2^2A_1^2), (A_2^2A_3^2))\sphericalangle$ (see Fig. 2) of the oriented translation segments $t_{A_2^2A_1^2}$, $t_{A_2^2A_3^2}$ and ω_3 is equal to the angle $((A_3^3A_1^3), (A_3^3A_2^3))\sphericalangle$ of the oriented translation segments $t_{A_3^3A_1^3}$ and $t_{A_3^3A_2^3}$ ($E_0 = A_2^2 = A_3^3$).

Substituting the coordinates of the points A_i^j (see (3.3) and (3.4)) $((i, j) \in \{(1, 3), (1, 2), (2, 3), (3, 2), (3, 0), (2, 0)\})$ to the appropriate equations of Lemma 3.1, it is easy to see that

$$\begin{aligned} \theta_2^0 &= -\theta_1^2, \quad \phi_2^0 - \phi_1^2 = \pm\pi \Rightarrow \mathbf{t}_2^0 = -\mathbf{t}_1^2, \\ \theta_3^0 &= -\theta_1^3, \quad \phi_3^0 - \phi_1^3 = \pm\pi \Rightarrow \mathbf{t}_3^0 = -\mathbf{t}_1^3, \\ \theta_3^2 &= -\theta_2^3, \quad \phi_3^2 - \phi_2^3 = \pm\pi \Rightarrow \mathbf{t}_3^2 = -\mathbf{t}_2^3. \end{aligned} \tag{3.9}$$

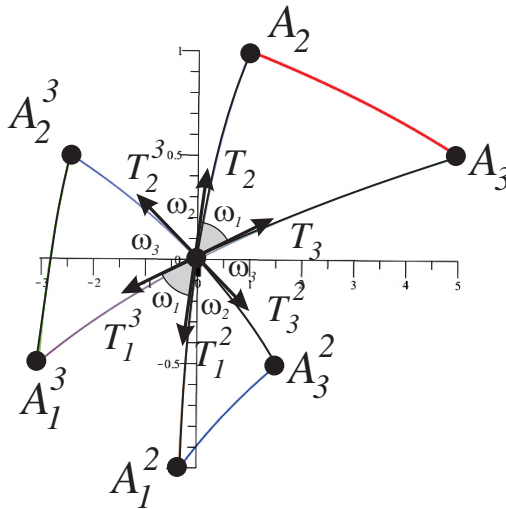


FIGURE 3. Translation triangle with vertices $A_1 = (1, 0, 0, 0)$, $A_2 = (1, -1, 1, 1)$, $A_3 = (1, 1/2, 5, 1/2)$ and its translated copies $A_1^2A_3^2E_0$ and $A_1^3A_2^3E_0$.

The endpoints T_i^j of the position vectors $\mathbf{t}_i^j = \overrightarrow{E_0T_i^j}$ lie on the unit sphere centred at the origin. The measure of angle ω_i ($i \in \{1, 2, 3\}$) of the vectors \mathbf{t}_i^j and \mathbf{t}_r^s is equal to the spherical distance of the corresponding points T_i^j and T_r^s on the unit sphere (see Fig. 3). Moreover, a direct consequence of equations (3.9) that each point pair (T_2, T_1^2) , (T_3, T_1^3) , (T_2^3, T_3^2) contains antipodal points related to the unit sphere with centre E_0 .

Due to the antipodality $\omega_1 = T_2E_0T_3\sphericalangle = T_1^2E_0T_1^3\sphericalangle$, therefore their corresponding spherical distances are equal, as well (see Fig. 3). Now, the sum of the interior angles $\sum_{i=1}^3(\omega_i)$ can be considered as three consecutive spherical arcs $(T_3^2T_1^2)$, $(T_1^2T_1^3)$, $T_1^3T_2^3$. Since the triangle inequality holds on the sphere, the sum of these arc lengths

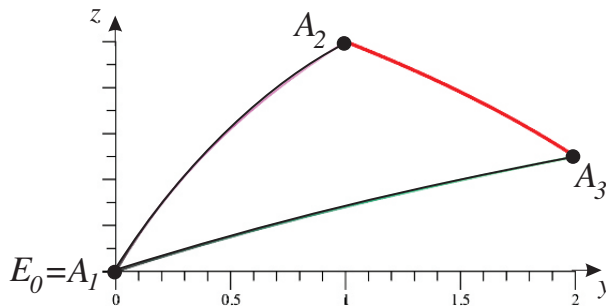


FIGURE 4. Translation triangle with vertices $A_1 = (1, 0, 0, 0)$, $A_2 = (1, 0, 1, 1)$, $A_3 = (1, 0, 2, 1/2)$. The translation curve segments $t_{A_1A_2}$, $t_{A_2A_3}$, $t_{A_3A_1}$ lie on the coordinate plane $[y, z]$ and the interior angle sum of this translation triangle is $\sum_{i=1}^3(\omega_i) = \pi$.

is greater or equal to the half of the circumference of the main circle on the unit sphere i.e. π . □

The following lemma is an immediate consequence of the above proof:

Lemma 3.3. The angle sum $\sum_{i=1}^3(\omega_i)$ of a **Sol** translation triangle $A_1A_2A_3$ is π if and only if the points T_i^j ($(i, j) \in \{(1, 3), (1, 2), (2, 3), (3, 2), (3, 0), (2, 0)\}$) lie in an Euclidean plane (Fig. 4).

Lemma 3.4. If the vertices of a translation triangle $A_1A_2A_3$ lie in a coordinate plane of the model of **Sol** geometry (see Section 2) or in a plane parallel to a coordinate plane then the interior angle sum $\sum_{i=1}^3(\omega_i) = \pi$.

Proof. We get from equation (2.12) of the translation curves that a point P lies in a coordinate plane then the corresponding translation curve t_{E_0P} also lies in the same coordinate plane.

Moreover, a direct consequence of formulas (2.3) and (2.6) than if a translation triangle $A_1A_2A_3$ lies in a coordinate plane α then its translated image by an orthogonal translation to α is in a to α parallel plane and each to α parallel plane can be derived as a translated copy of α . □

We can determine the interior angle sum of arbitrary translation triangle. In the following table we summarize some numerical data of interior angles of given translation triangles:

Table 1: $A_2(1, -1, 1, 1), A_3(1, 1/2, 5, z^3)$				
z^3	ω_1	ω_2	ω_3	$\sum_{i=1}^3(\omega_i)$
-10	1.378505	1.52957	0.39949	3.30757
-2	1.37467	1.45044	0.41389	3.23900
-1	1.36841	1.31743	0.48434	3.17018
1/100	1.35376	1.04468	0.74818	3.14661
1/10	1.35196	1.01850	0.77962	3.15008
1/2	1.34369	0.91985	0.90711	3.17066
3/4	1.33931	0.87828	0.96332	3.18092
3/2	1.34516	0.83131	0.98842	3.16489
2	1.37178	0.83021	0.94235	3.14433
5	1.46886	0.84547	0.86833	3.18265
10	1.47522	0.84678	0.86665	3.18866

Table 2: $A_2(1, -1, 1, 1), A_3(1, 1/2, y^3, 1/2)$				
y^3	ω_1	ω_2	ω_3	$\sum_{i=1}^3(\omega_i)$
-10	1.90559	0.77539	0.48862	3.16960
-2	1.99438	0.39617	0.86884	3.25939
-1	2.02152	0.38864	0.84198	3.25214
1/100	1.89224	0.42533	0.83598	3.15355
1/10	1.86415	0.43075	0.85319	3.14808
1/2	1.73149	0.45855	0.95244	3.14248
3/4	1.65752	0.47867	1.01153	3.14772
3/2	1.51011	0.54873	1.10619	3.16502
2	1.45565	0.60090	1.11440	3.17095
5	1.34369	0.91985	0.90711	3.17066
10	1.30564	1.27407	0.58095	3.16067

By the above investigation we can say that the **Sol** geometry (and the Thurston geometries) keep several interesting open questions (see e.g. [14], [16]). Detailed studies are the objective of ongoing research. Applications of the above projective method seem to be interesting in (non-Euclidean) crystallography as well.

References

- [1] Brieuessel, J., Tanaka, R., *Discrete random walks on the group Sol*, Isr. J. Math., **208**(2015), no. 1, 291-321.
- [2] Brodaczewska, K., *Elementargeometrie in Nil*, Dissertation (Dr. Rer. Nat.) Fakultät Mathematik und Naturwissenschaften der Technischen Universität Dresden, 2014.
- [3] Cavichioli, A., Molnár, E., Spaggiari, F., Szirmai, J., *Some tetrahedron manifolds with Sol geometry*, J. Geom., **105**(2014), no. 3, 601-614.
- [4] Chavel, I., *Riemannian Geometry: A Modern Introduction*. Cambridge Studies in Advances Mathematics, 2006.

- [5] Csima, G., Szirmai, J., *Interior angle sum of translation and geodesic triangles in $\widetilde{\mathbf{SL}_2\mathbf{R}}$ space*, Filomat, **32/14**(2018), 5023-5036.
- [6] Kobayashi, S., Nomizu, K., *Fundation of Differential Geometry, I.*, Interscience, Wiley, New York, 1963.
- [7] Kotowski, M., Virág, B., *Dyson's spike for random Schroedinger operators and Novikov-Shubin invariants of groups*, Commun. Math. Phys., **352**(2017), 905-933.
- [8] Milnor, J., *Curvatures of left Invariant metrics on Lie groups*, Advances in Math., **21**(1976), 293-329.
- [9] Molnár, E., *The projective interpretation of the eight 3-dimensional homogeneous geometries*, Beitr. Algebra Geom., **38**(1997), no. 2, 261-288.
- [10] Molnár, E., Szilágyi, B., *Translation curves and their spheres in homogeneous geometries*, Publ. Math. Debrecen, **78**(2010), no. 2, 327-346.
- [11] Molnár, E., Szirmai, J., *Symmetries in the 8 homogeneous 3-geometries*, Symmetry Cult. Sci., **21**(2010), no. 1-3, 87-117.
- [12] Molnár, E., Szirmai, J., *Classification of Sol lattices*, Geom. Dedicata, **161**(2012), no. 1, 251-275.
- [13] Molnár, E., Szirmai, J., Vesnin, A., *Projective metric realizations of cone-manifolds with singularities along 2-bridge knots and links*, J. Geom., **95**(2009), 91-133.
- [14] Molnár, E., Szirmai, J., Vesnin, A., *Packings by translation balls in $\widetilde{\mathbf{SL}_2\mathbf{R}}$* , J. Geom., **105**(2014), no. 2, 287-306.
- [15] Scott, P., *The geometries of 3-manifolds*, Bull. London Math. Soc., **15**(1983), 401-487.
- [16] Szirmai, J., *A candidate to the densest packing with equal balls in the Thurston geometries*, Beitr. Algebra Geom., **55**(2014), no. 2, 441-452.
- [17] Szirmai, J., *Bisector surfaces and circumscribed spheres of tetrahedra derived by translation curves in Sol geometry*, New York J. Math., **25**(2019), 107-122.
- [18] Szirmai, J., *The densest translation ball packing by fundamental lattices in Sol space*, Beitr. Algebra Geom., **51**(2010), no. 2, 353-373.
- [19] Szirmai, J., *Nil geodesic triangles and their interior angle sums*, Bull. Braz. Math. Soc. (N.S.), **49**(2018), 761-773.
- [20] Thurston, W.P. (and Levy, S. editor), *Three-Dimensional Geometry and Topology*, Princeton University Press, Princeton, New Jersey, vol. **1**, 1997.

Jenő Szirmai

Department of Geometry, Institute of Mathematics,
 Budapest University of Technology and Economics,
 Muegyetem rkp. 3., H-1111 Budapest, Hungary
 e-mail: szirmai@math.bme.hu